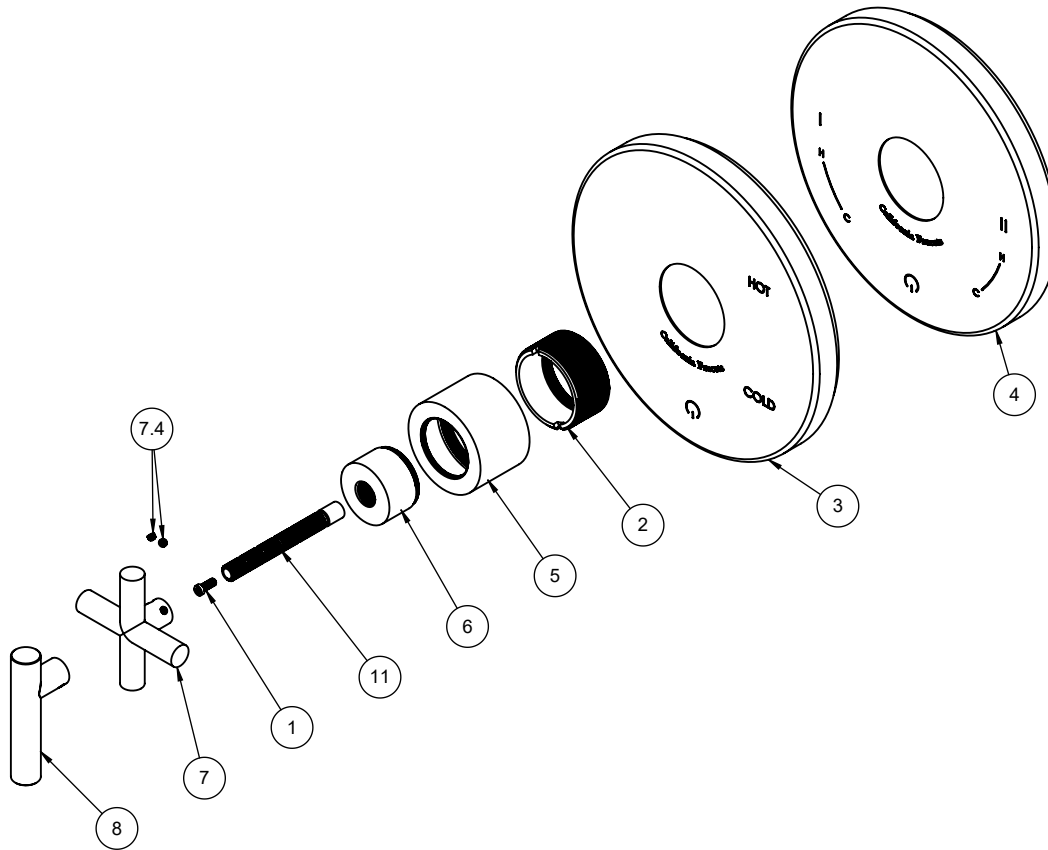


TO-PBL-65
TO-PBL-66
TO-PB2L-65
TO-PB2L-66



To order spare parts add and/or replace as stated below:

SPD- prefix added to part number(s)
-ZZ replaced with finish code (see finish table)
-WW replaced with **-90** (light finish) or **-96** (dark finish)

Ex: **SPD-7-100463-PC** or **SPD-86030-96**

ITEM	PART NO.	DESCRIPTION	QTY
1	86078-90	SCREW, M4 X 0.7 X 10MM, w/Ø5.80 PHL PH HD SS	1
2	10292-98	BUSHING, PB G2	1
for TO-PBL	3	7-100106-ZZ ASM, CONT PB PLATE & GASKET	1
for TO-PB2L	4	7-100547-ZZ ASM, CONT PB2 PLATE & GASKET	1
	5	10294-ZZ ESCUTCHEON, CONT, PB G2	1
	6	571380-ZZ ESCUTCHEON, 57, SERIES	1
for 65 Series	7	7-653143-ZZ KIT, CTEMP CROSS HDL, 65 SERIES (incl. 7.4)	1
	7.4	86030-WW SETSCREW 8-32 X 1/8 SCKT HD CUP PT SS	2
for 66 Series	8	7-663145-ZZ ASM, HANDLE, SHORT CONT LVR (incl. 7.4)	1
for ITEM 7.4	9	882042-99 KEY, ALLEN, 5/64", BLACK	1
	11	880137-98 BROACH EXTENSION 3-1/4"(L) X 16T(M) X 20T(F)	1