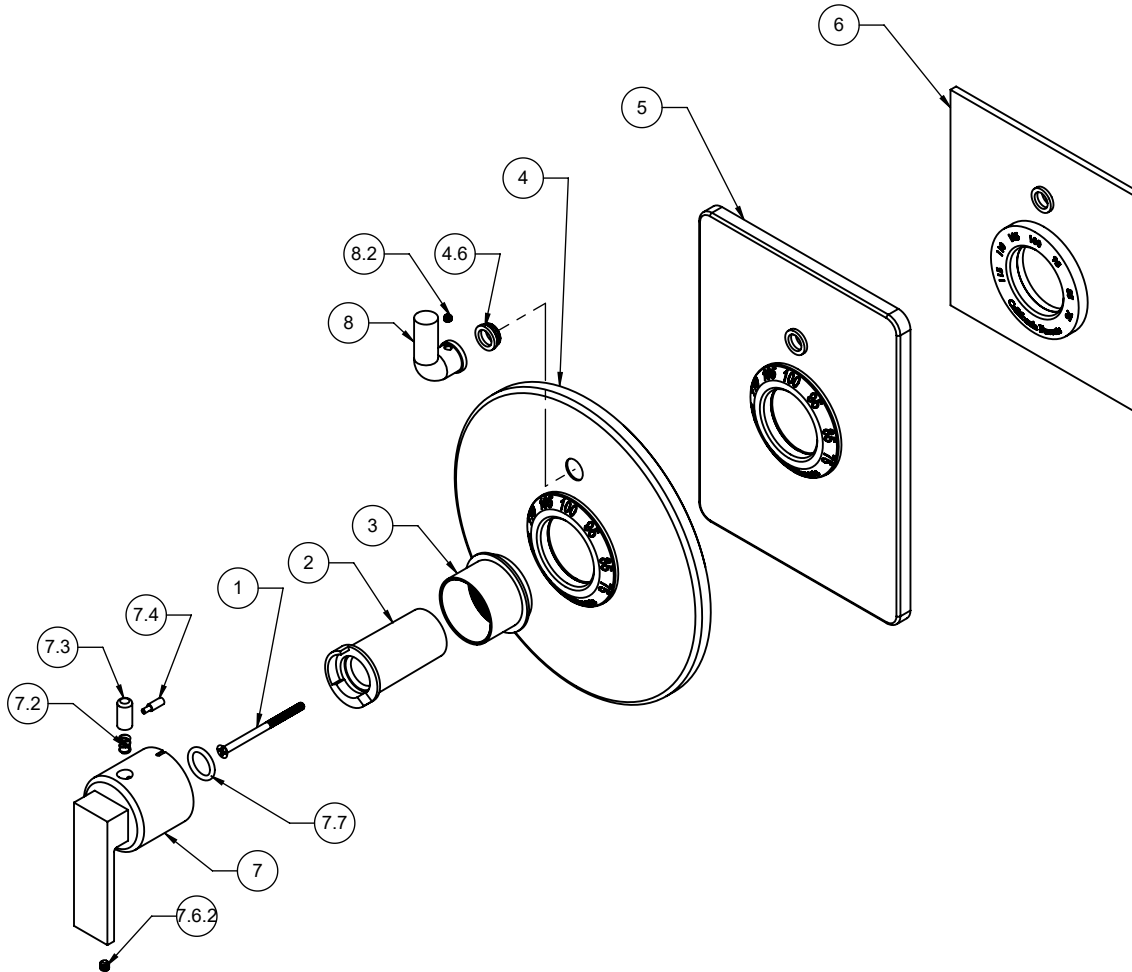


TO-TH1L-77
TO-THC1L-77
TO-THF1L-77



To order spare parts add and/or replace as stated below:

SPD- prefix added to part number(s)
-ZZ replaced with finish code (see finish table)
-WW replaced with **-90** (light finish) or **-96** (dark finish)

Ex: **SPD-7-100463-PC** or **SPD-86030-96**

ITEM	PART NO	DESCRIPTION	QTY.
1	86059-90	SCREW M4 X 0.7 X 60MM PH FLT HD SS	1
2	10092-81	STOP, THERM TEMP, SHORT	1
3	10090-ZZ	SLEEVE, THERMO MOUNTING	1
for TO-TH1L	4	7-100041-ZZ ASM, SHWRPLATE, CONT RD, THERM W/1VC (incl. 4.6)	1
	4.6	223467-99 NYLON BUSHING FOR PBS FACEPLATE	1
for TO-THC1L	5	7-100047-ZZ ASM, SHWRPLATE, CONT SQ, THERM W/1VC (incl. 4.6)	1
for TO-THF1L	6	7-100239-ZZ ASM, SHWRPLATE, CONT FLAT, THERM W/1 VC (incl. 4.6)	1
7	TH-H-77-ZZ	THERM HANDLE KIT (incl. 7.2, 7.3, 7.4, 7.6.2, 7.7)	1
7.2	10098-99	SPRING, Ø.24 X .312 LG, 1.4 LB/IN	1
7.3	10093-81	BUTTON, BLACK THERM	1
7.4	10062-98	PIN, THERMO BONNET	1
7.6.2	86033-WW	SETSCREW 10-24 X 3/16 SCKT HD CUP PT SS	1
7.7	87222-80	O-RING Ø13.94 X 2.62 (-113) EPDM A70 (NSF61-12 & WRAS)	1
8	7-100181-ZZ	ASM, THERM VC - MODERN (incl. 8.2)	1
8.2	86030-WW	SETSCREW 8-32 X 1/8 SCKT HD CUP PT SS	1
for ITEM 8.2	9	882042-99 KEY, ALLEN, 5/64", BLACK	1
for ITEM 7.6.2	10	882043-99 KEY, ALLEN, 3/32", BLACK	1