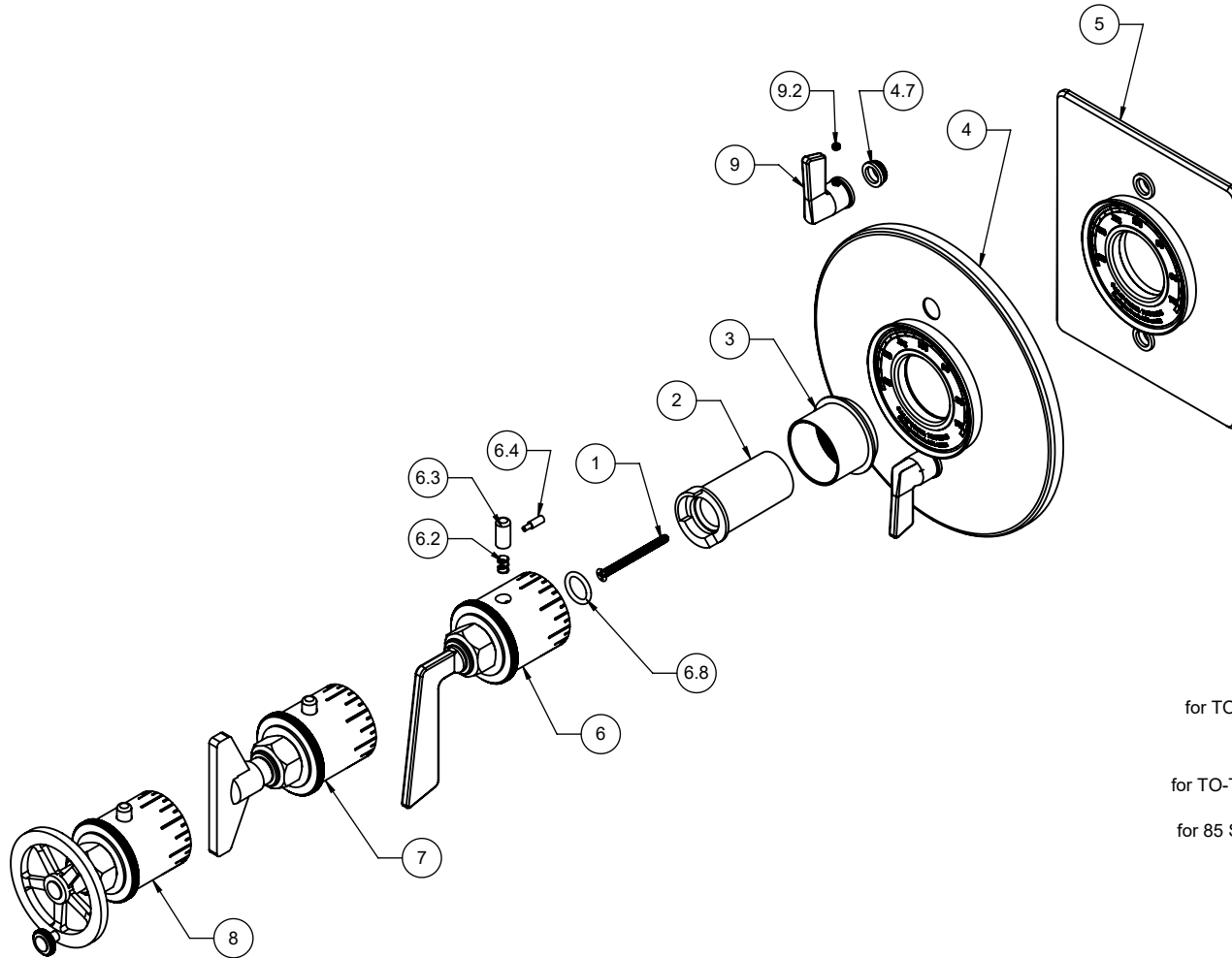


TO-TH2L-85
 TO-TH2L-85B
 TO-TH2L-85W
 TO-THQ2L-85
 TO-THQ2L-85B
 TO-THQ2L-85W



To order spare parts add and/or replace as stated below:

SPD- prefix added to part number(s)

-ZZ replaced with finish code (see finish table)

-WW replaced with **-90** (light finish) or **-96** (dark finish)

Ex: **SPD-7-100463-PC** or **SPD-86030-96**

ITEM	PART NO	DESCRIPTION	QTY.
1	86255-90	SCREW M4 X 0.7 X 50MM PH FLT HD SS	1
2	10092-81	STOP, THERM TEMP, SHORT	1
3	10090-ZZ	SLEEVE, THERMO MOUNTING	1
for TO-THN	4	7-100336-ZZ ASM, SHWRPLATE, RND INDUS THERM W/ 2VC <i>(incl. 4.7)</i>	1
	4.7	223467-99 NYLON BUSHING FOR PBS FACEPLATE	2
for TO-THQN	5	7-100333-ZZ ASM, SHWRPLATE, FLAT CHF THERM W/ 2 VC <i>(incl. 4.7)</i>	1
for 85 Series	6	TH-H-85-ZZ THERM HANDLE KIT <i>(incl. 6.2, 6.3, 6.4, 6.8)</i>	1
	6.2	10098-90 SPRING, ϕ .24 X .312 LG, 1.4 LB/IN	1
	6.3	10093-81 BUTTON, BLACK THERM	1
	6.4	10062-98 PIN, THERMO BONNET	1
	6.8	87222-80 O-RING ϕ 13.94 X 2.62 (-113) EPDM A70 (NSF61-12 & WRAS)	1
for 85B Series	7	TH-H-85B-ZZ THERM HANDLE KIT <i>(incl. 6.2, 6.3, 6.4)</i>	1
for 85W Series	8	TH-H-85W-ZZ THERM HANDLE KIT <i>(incl. 6.2, 6.3, 6.4)</i>	1
	9	7-100337-ZZ ASM, VC LEVER - FLAG <i>(incl. 9.2)</i>	2
	9.2	86170-WW SETSCREW 8-32 X 1/8" SCKT CONE PT SS	1
for ITEM 9.2	10	882042-99 KEY, ALLEN, 5/64", BLACK	1